

Fact Sheets 2017



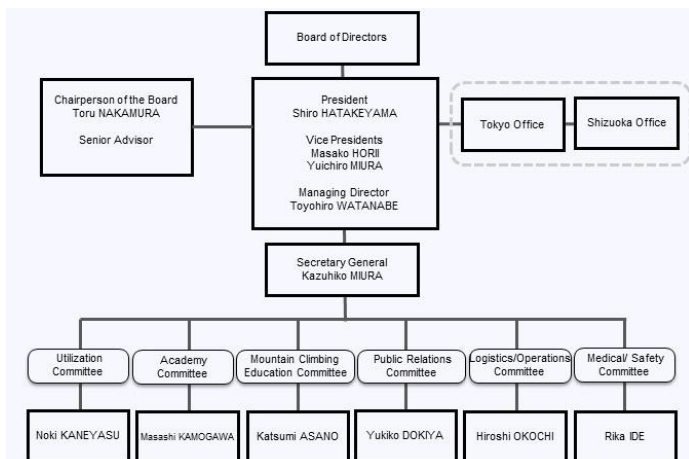
Profile

| | |
|---------------------------|--|
| Organization Name | Nonprofit Organization Mount Fuji Research Station (former "Valid Utilization of Mt. Fuji Weather Station") |
| Date of Foundation | November 27, 2005 |
| Certified NPO | January 8, 2016 |
| Our Mission | The mission of MFRS is to support and enhance the activities of researchers and students in a wide variety of fields including science and education by maintaining and providing a unique Research Station atop Mt. Fuji. |
| Main Office | Chiyoda-ku, Tokyo |
| Sub Office | Mishima-city, Shizuoka |
| Appropriate Office | Tokyo Metropolitan Government |
| Membership | 280 |

Board Member

| | | |
|--------------------------|---|--|
| President | Toru Nakamura | |
| Senior Advisors | Kuniomi Iwai Ryu Shionoya Hitoshi Goto Masahide Komiyama | Sadakazu Tanigaki Heita Kawakatsu Shigeru Horiuchi |
| Auditors | Kunitoshi Kiko | Masahiro Sato |
| Chairperson | Shiro Hatakeyama | |
| Vice Chairpersons | Yuichiro Miura | Masako Horii |
| Managing Director | Toyohiro Watanabe | |
| Secretary General | Kazuhiko Miura | |
| Directors | Katsumi Asano Michiko Imai Hiroshi Okochi Shungo Kato Masashi Kamogawa Yoshiyuki Kobayashi Fumio Tanaka Kumiko Hashimoto Nobuyuki Hirai Yutaka Furuta Yukiya Minami | Rika Ide Yasunobu Iwasaka Yoko Katayama Naoki Kaneyasu Hiroshi Kobayashi Kazuya Sasaki Yukiko Dokiya Kaoru Haruna Toshitsugu Fujii Shigeru Masuyama Takeaki Mori |

Organizational Chart



Facts and Figures

Membership

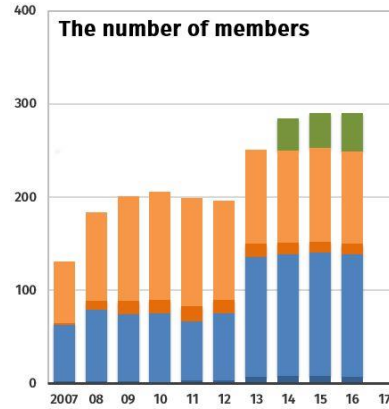
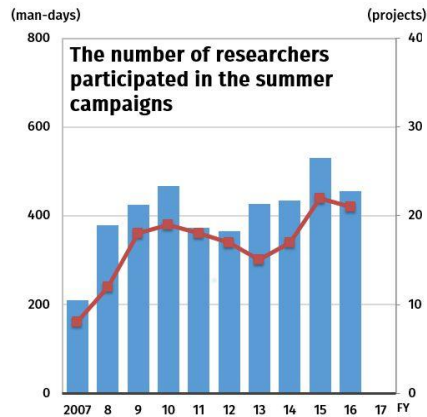


Figure shows the number of members of MFRS during 2007 through 2016. The number averaged around 200 until 2012. In 2013, the number of members increased as a result of the campaign in order to apply for the certification of nonprofit organization. In 2014, student membership was added to help students get membership discounts on their activities.



Projects and Participants



The number of researchers averages around 400 man-days a summer, showing a rapid increase until 2010 and a decrease in 2011, presumably owing to the earthquake, tsunami and nuclear accident. Costs for the maintenance of the station have been supported mostly by private funds gained through competition. The cost for each research is done on their own.

Presentations at Academic Conferences

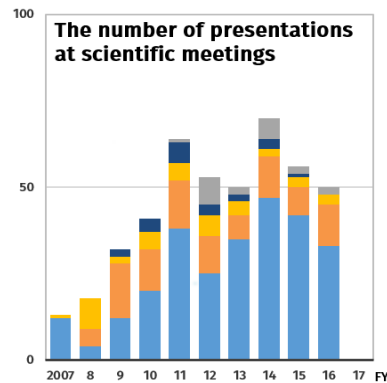


Figure shows the number of oral and poster presentations at scientific meetings during 2007 to 2016, in each research field. Students who are given the Student Presentation Awards for their excellent presentation at international meetings are on the increase.

Table.1 Papers/Presentations As of December 31, 2016

| Research Field | Publications in the referred Journals | Commentary Review | Presentations |
|-----------------------|---------------------------------------|-------------------|---------------|
| Atmospheric Chemistry | 24 | 22 | 268 |
| Atmospheric Physics | 16 | 15 | 97 |
| Mountain Medicine | 7 | 4 | 40 |
| Permafrost | 2 | 4 | 21 |
| Education | 3 | 9 | 23 |
| Total | 52 | 54 | 449 |

Table.2 Other Utilization Fields of MFRS

| Research Field | Projects |
|------------------------------|--|
| Environmental Education | Development of educational tool for scientific experiments Distance Learning |
| Telecommunication Technology | Radio-wave propagation test atop Mt. Fuji Verification test of Environmental sensor |
| Meteorology | Verification test of 3 dimensional rain gauge |
| Architecture | Research on the living condition of MFRS |
| Satellite positioning | Satellite positioning Research Project |
| Animal Ecology | Research on Japanese dormouse |
| Food Preservation | Research on quality change of agricultural and livestock products atop Mt. Fuji |
| Arts | Message in a Bottle project |